

We are the Australia Centre!



How long has the Centre been in Potsdam?

The Australia Centre was opened in March 1995 by the then Australian Prime Minister Mr. Paul Keating and the Ministerpräsident of Brandenburg Dr. Manfred Stolpe.

What are the goals of the Centre?

The Centre aims to promote Australian expertise and know-how in a wide range of areas, including Australian Studies, Multicultural Studies, Environmental Research, and Management. The Centre's main activities and responsibilities are the organization of conferences and Australian cultural exhibitions, promotion of joint research projects and fostering of academic and student exchange.

Who is the Australia Centre?

The primary partners of the Australia Centre are a Consortium of six Australian Universities and the University of Potsdam in Germany. The six Australian universities are: The Australian National University (ANU), the University of Canberra, the University of Melbourne, Monash University, the University of New South Wales (UNSW), and the University of Sydney.

Who is responsible for management of the Centre?

The Australia Centre has two Directors: Prof. Dr. Hans-Georg Petersen, the Managing Director, and Dr. Ditta Bartels, the Australian Director. Prof. Petersen has the Chair of Public Finance at the University of Potsdam and Dr. Bartels is Deputy Director of the International Office at UNSW in Sydney. At our office in Potsdam we have a German Executive Officer, Ruth Bader, and a Project Officer, Rico Janke.

How are the Australian Universities and the University of Potsdam involved?

Visiting academics from the Consortium Universities play a particularly important role at the Centre. So far they have included: Prof. Chris Rizos, Faculty of Engineering, UNSW; Prof. Malcolm Smith, Director, Asian Law Centre, University of Melbourne; Dr. Elisabeth Patz, School of Communication, Media & Tourism, University of Canberra; and Dr. Rosalynn Smith, Monash University. The Centre also hosts many short-term visits of Australian academics, artists and writers. In addition to academic visits, the relationship between the universities is intended to facilitate student exchange and foster an interest in the other country. The University of Potsdam offers courses in Australian Studies which focus both on the language and culture of Australia. The Australia Centre hopes to transform academic interest into experience through increased student exchange.

Outside of the Consortium are there other partners who work with the Centre?

The Centre has a long list of affiliated organizations, including the GeoForschungsZentrum (GFZ), the Institute for Climate Impact Research, the Moses Mendelsohn Centre, the Einstein Forum (all in Potsdam); the Max Planck Institute for Human Development and Education, the Japan-German Centre (both in Berlin.); and the Association for Australian Studies (Chair, Prof. Dr. Brusten, Gesamthochschule Wuppertal). Also responsible for important support of the Australia Centre are government institutions, such as the Department of Foreign Affairs and Trade (DFAT) and DEETYA in Australia and the Foreign Office and the Brandenburg State Government in Germany.

Recent Seminars

Study in Australia!!

As part of an effort to increase the number of German students choosing Australia as an overseas study destination, the Australian International Education Foundation (AIEF) arranged a two day seminar from April 25-26 which took place in cooperation with the Australia Centre at the University of Potsdam. The seminar provided academics with the opportunity to gain a clearer understanding about the structure and functions of International Offices at Australian Universities. The second day was open to students interested in attending an Australian university. Representatives from 14 universities were available to answer questions.

GPS Technology and the Indonesian Land Administration Act

A collaborative seminar by the GeoForschungsZentrum (GFZ) in Potsdam and the Australia Centre was held on June 6 and provided expert information on new developments using Global Positioning Systems technology to accelerate the registration and administration of land in Indonesia. The seminar featured visiting expert Dr. Hasanuddin Abidin of the Institute of Technology Bandung, Indonesia.

Rostock Teachers Seminar

On March 9, the Australia Centre participated in a conference in Rostock designed to better inform teachers of history and geography about Australia. The seminar included presentations by Germans and Australians regarding the politics, culture and history of the Australian society. The event marked an interesting opportunity for the Australia Centre to participate in an informational outreach program to the new Bundesländer.

Forthcoming Events and Conferences

Aboriginal Art Exhibition

This Autumn, the Australia Centre eagerly awaits its first cultural exhibition, "Groundwork". Under an initiative of Prof. Iain McCalman, Director of the Humanities Research Centre at ANU, and Dr. Sylvia Kleinert, ANU, 25 Aboriginal prints from the ANU Canberra School of Art collection are to be sent from Australia to Potsdam.

Conferences

January 1997

'The Public Sector in Germany and Australia: From Hierarchy to Contract Management'

July 1997

'Germany-Japan-Australia: Politics, Economics and Security'

September 1997

'Universities in Germany and Australia: Higher Education Reform'

'Das Hohe Lied: love & destruction'

Australian artist Dennis Del Favero is planning a multi-site, multimedia installation for Berlin in 1998. The project will investigate the psycho-sexual experience of Eastern European refugees forced to work in the sex trade. Del Favero's exhibits 'Pietà' and 'Motel Vilina Vlas' were shown in Berlin from 19 July through 7 September 1996.

Come Visit Us!!!

Visitors may reach the Centre from Berlin by either catching the S1 to Wannsee and then transferring to either the S3 or the S7 to Potsdam Stadt. Or catch the S3 or S7 deeper in the city and take either all the way to Potsdam.

Once you have reached Potsdam Stadt S-Bahnhof, proceed to the tram station, just up the hill. Take either the 92,93, 96 or 98 tram to "Platz der Einheit" (either West or South is fine). Continue up Friedrich Ebert Straße until you reach Brandenburger Straße, where you will make a right turn. You should see a church directly in front of you. At the end of Brandenburger Straße is Am Bassin. Take a left on Am Bassin, and the Australia Centre is a distinctive brick building with yellow stripes.

How to Reach Us

Phone: +49 (0)331-291 609

Fax: +49 (0)331-270 89 04

Street Address:

Am Bassin 4
14467 Potsdam

Mailing Address:

Postfach 900 327
14439 Potsdam

Email:

Prof. Dr. H.-G. Petersen - Managing Director
petersen@rz.uni-potsdam.de

Dr. Ditta Bartels - Australian Director
d.bartels@unsw.edu.au

Ruth Bader - Executive Officer
bader@rz.uni-potsdam.de

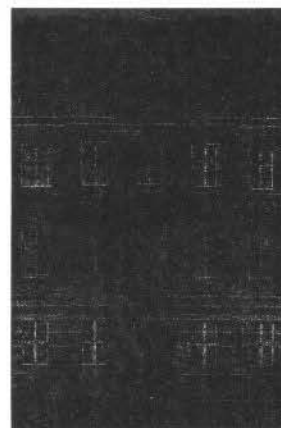
WWW:

http://141.89.32.20/u/int_diszpl/australienzent/index.htm

The Australia Centre



University of Potsdam



OUR NEW BUILDING!

AM BASSIN 4, IN POTSDAM

PLEASE SEE BACK FOR FURTHER INFORMATION ABOUT REACHING THE CENTRE